

**Fylde Decorative & Fine Arts Society**

Member of the National Association of  
Decorative & Fine Arts Societies

**ARTS EDUCATION, HERITAGE & CONSERVATION**



**LIFE WITH LYTTON:  
Dora Carrington  
and her circle  
Lecture by Sandra Pollard**

**Wednesday 7<sup>th</sup> May 2014 at 2pm**

United Reformed Church Hall  
St. Georges Rd, St Annes-on-Sea, FY8 2AE

[www.fyldedfas.org.uk](http://www.fyldedfas.org.uk)



## Sandra Pollard

Sandra Pollard has lectured for over 35 years, presently for the Open University and Liverpool University School of Continuing Education. She works with the National Trust, the Art Fund, WEA and is a Trustee of the Bowes Museum. She is a founder member, past Chairman and now President of North Yorkshire and South Durham DFAS.

### BIBLIOGRAPHY OF (DORA) CARRINGTON AND HER CIRCLE

**Jane Hill, *The Art of Dora Carrington***, Herbert Press, 1994 – the best introduction to Carrington and her world, with good illustrations and now in paperback

**Gretchen Gerzina, *Carrington***, OUP, 1990

**Noel Carrington, *Carrington: Paintings, Drawings and Decorations***, Oxford Polytechnic Press, 1978

**Mary Ann Caws, *Women of Bloomsbury: Virginia, Vanessa, Carrington***, Routledge, 1990

**Jan Marsh, *Bloomsbury Women***, Pavilion, 1995

David Boyd Hancock, *A Crisis of Brilliance*, Old Street Publishing, 2009

**Michael Holroyd, *Lytton Strachey: a Biography***, Penguin, 1971 – still the classic biography

**Paul Levy and Penelope Marcus (eds), *The Letters of Lytton Strachey***, Penguin, 2006

**Richard Shone, *Bloomsbury Portraits***, Phaidon, 1976 and 1993

**Isabelle Anscombe, *Omega and After***, Thames and Hudson, 1981

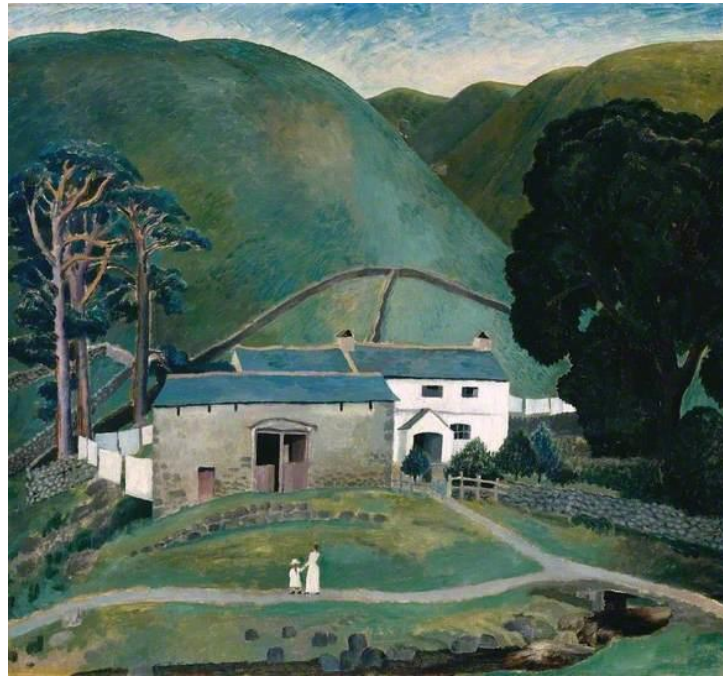
**Francis Spalding, *The Bloomsbury Group***, National Portrait Gallery, 2005

**Michael Holroyd, *Augustus John***, Vintage, republished 1997

**Sarah MacDougall, *Mark Gertler***, John Murray, 2002

**Miranda Seymour, *Ottoline Morrell: Life on the Grand Scale***, Sceptre, 1992

Some of these are no longer in print but [www.abebooks.com](http://www.abebooks.com) is an excellent website for finding second hand art books.



*Farm at Watendlath* by Dora Carrington, 1921

*During the period 1917- 1921, Carrington's subjects were mostly intimate portraits or landscapes. This painting depicts Watendlath Farm, near Keswick in the Lake District, where the newly-wed Carrington spent a holiday with her husband and friends.*

**Tate Gallery**

Carrington (as she preferred to be called) lived a short but full life, dominated by her devotion to Lytton Strachey, the biographer and member of the Bloomsbury Group. She was a very talented artist who painted many portraits of her friends and highly individual landscapes, as well as decorating tiles and furniture with flair and wit. Her complex personality led to several intimate and complicated relationships with men and women and this lecture discusses her world of art and intellect, fun and tragedy, through her own work as well as through the paintings of the other artists in her circle.

# Future Events

**Wednesday 4th June 2014**

GERTRUDE JEKYLL: Artist and Gardener:

Lecture by Twigs Way

**Wednesday 18<sup>th</sup> June**

**Special Interest Day**

THE MAGNIFICENT TOMBS AND TEMPLES OF THE PHARAOHS

Lecture by Lucia Gahin

*Tickets price £28, to include 3 lectures and a 2-course lunch*

*St Annes Old Links Golf Club*

**Thursday 10<sup>th</sup> July**

**Day visit to Hardwick Hall**

*Tickets price £25 for National Trust members*

*£36 for non-members*

Due to John Parkinson's ongoing involvement in the Society's finances, there is potential for conflict of interest with his appointment as Independent Financial Examiner. John has now stepped down from this role and we are grateful to Jeremy Stirrup for agreeing to replace him.

Dear Members,

Good news, the membership fee is remaining the same for our next lecture year 2014-2015. However, we now have a Waiting List and so in order to implement this successfully we are urging our members to renew their membership by the **31 August 2014 at the latest**. If it is not renewed by this date we will presume you no longer wish to remain a member of Fylde DFAS and we will therefore offer any available places to those on the Waiting List.

Thank you for your cooperation in this matter.

Pauline Hamilton, Marion Nuttall

# The Bloomsbury Group

Desmond MacCarthy (1877–1952)

Virginia Wolfe (1882–1941)

Leonard Wolfe (1880–1969)

Vanessa Bell (1879–1961)

Clive Bell (1881–1964)

Duncan Grant (1885–1978)

Roger Fry (1866–1934)

Lytton Stracey (1880–1932)

Dora Carrington (1893–1932)

Lady Ottoline Morrell (1873–1938)

John Maynard Keynes (1883–1946)

E.M.Forster (1879–1970)

Frances Partridge (1900–2004)

Gerald Brennan (1984–1987)

David Garnett (1892–1981)

Phillippa Stracey (1872–1968)

and Majorie Stracey (1882–1964)

Margery Fry (1874–1957)

Bertrand Russell (1872–1970)

