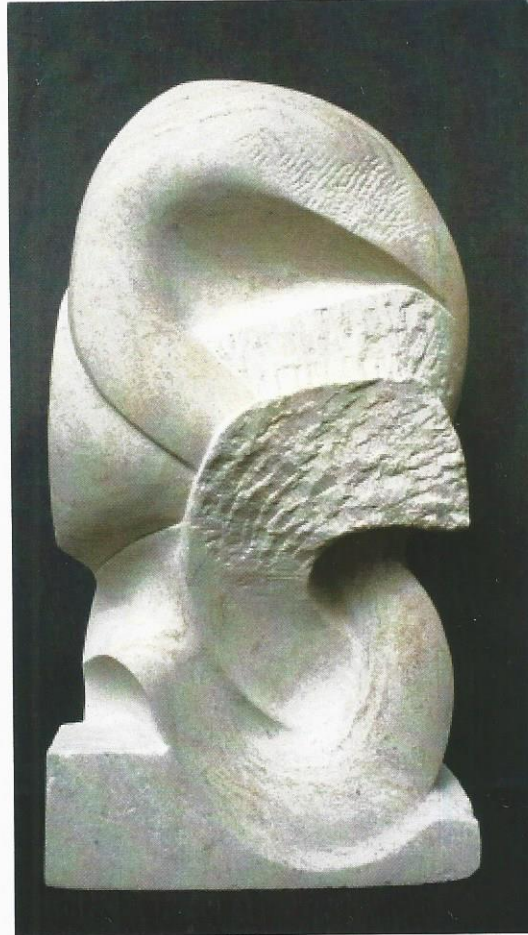




## Fylde Decorative & Fine Arts Society

Member of the National Association of Decorative & Fine Arts Societies  
Arts Education, Heritage and Conservation in Blackpool, Fylde and Wyre

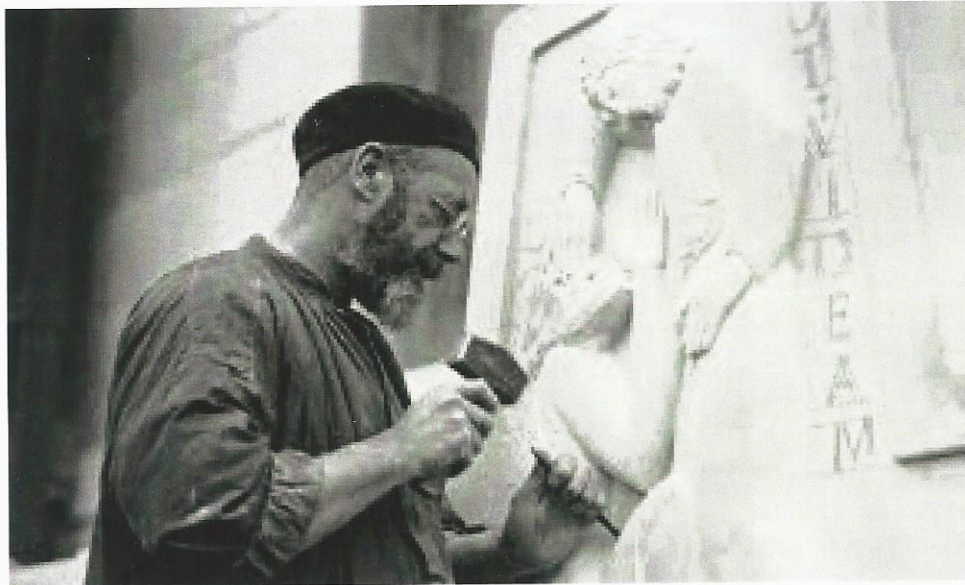


**'...A Little Revolution'**  
**The Revival of Direct Carving in Stone**  
Madeline Goold

[www.fyldedfas.org.uk](http://www.fyldedfas.org.uk)

1 February 2017  
St Annes United Reformed Church Hall  
FY8 2AE

## Eric Gill, Jacob Epstein, and the Revival of the Romanesque Tradition of Direct Carving in Stone



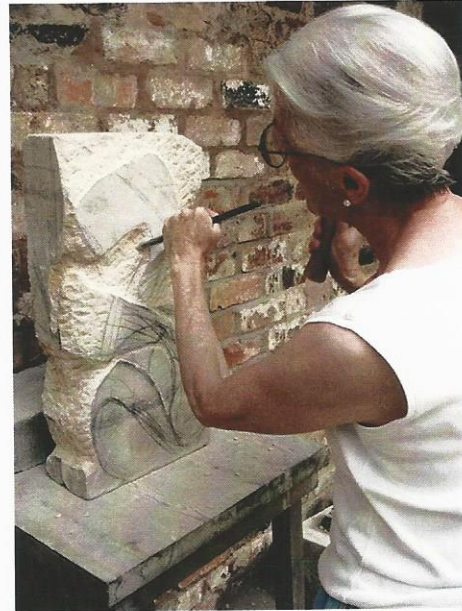
*Eric Gill working on a project for Moorfields Eye Hospital, 1934*



*Jacob Epstein carving Maternity, 1910*

The working collaboration between Eric Gill and Jacob Epstein in 1910 altered the course of sculpture in England. Rejecting both the Beaux Arts tradition of preparatory, modelled maquettes, and the mason's rigid craft practices, they did their carving themselves, 'uniting what should never have been separated: the artist as a man of imagination, and the artist as workman.' (Gill, Autobiography).

By showing examples of today's direct carving in stone — that is, without the use of an intermediate model — Madeline Goold will in this lecture take us from sketchbook to working drawing and through the carving process to the final piece.

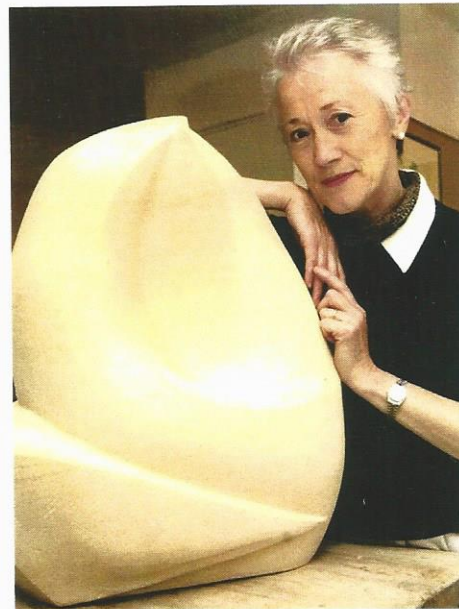


Cover: Madeline Goold, *Tumbling Kittiwakes*

Above: working on *Tumbling Kittiwakes*

## Madeline Goold

Madeline Goold, LLB; B.A; M.Phil; SWLA, read law at the London School of Economics and Fine Art and Art History at the Barber Institute, Birmingham; a professional sculptor, she exhibits annually at the Mall Galleries with the Society of Wildlife Artists. She is currently writing up doctoral research at Birmingham University, and is a LAMDA (London Academy of Music and Dramatic Art) gold medallist with Distinction in public speaking.



## Future Events

and dates for your diary from the DFAS website—[www.fyldefas.org.uk](http://www.fyldefas.org.uk)

**Wednesday 1 March 2017**

***Lawrence of Arabia***

Lecture by Dr Neil Faulkner

**Wednesday 5 April 2017**

***Northern Lights - Scandinavian design in the mid-20th century***

Lecture by Deborah Lambert

**Tuesday 23 March 2017**

Fylde DFAS Special Interest Day  
(10.30am-3.30pm)

***Queen of Sheba, Empress or Enigma and Treasures of the Silk Road***

Two lectures by Christopher Bradley  
*Booking is now open*

**Thursday 25th May 2017**

Fylde DFAS Special Interest Day  
(10.30am-3.30pm)

***Bestriding the World—Like a Colossus: The Life and Work of Sir Joseph Paxton (1803-1865) and The Rejection of the Landscape: formality, technology and plant hunting across the globe.***

Two lectures by James Bolton  
*Further information available shortly*

**12th April 2017**

***Kirby Lonsdale and Leighton Hall***

A Fylde DFAS trip to Kirby Lonsdale and Leighton Hall. There will be time to explore and have lunch in Kirby Lonsdale and then travel to nearby Leighton Hall for a tour of the house and gardens, followed by refreshments.

*Booking is now open*

**18th-22nd June 2017**

***Oxford and Stratford-upon-Avon***

This 5-day Fylde DFAS tour has been booked with Tailored Travel; the itinerary has yet to be finalised. The cost will be approximately £560 per person, plus £100 single supplement.

*Booking is now open*

**12th July 2017**

***The Atkinson Gallery, Southport and Rufford Old Hall***

Fylde DFAS day trip to the Atkinson Gallery and Rufford Old Hall to coincide with an exhibition of Surrealist art at the Atkinson, including works by John Armstrong (1893-1973).

*Further information available shortly*

**17th-21st September 2017**

***Lisbon, Portugal***

This 5-day Fylde DFAS tour has been booked with Tailored Travel; return flights are from Liverpool. The approximate cost will be £730 per person, plus £159 single supplement.

*Booking is now open*

