



THE ARTS  
SOCIETY  
FYLDE

# In the Picture

---

*Newsletter #28 / Spring 2024*

# Welcome

---

Welcome to the spring 2024 issue of *In the Picture*. This is our 28<sup>th</sup> newsletter and the first without our regular '*Letter from our Chair*' item – for the simple reason that we are currently without a Chair. However, we are delighted to announce that member Sarah Clayden was co-opted onto the Committee, as Vice Chair, at our March meeting. Thank you Sarah and a very warm welcome to you from The Arts Society Fylde Committee - we hope you enjoy your role. The position of Chair remains vacant. Please do consider whether this might be a role you could take on – particularly now we have a Vice Chair - you would get lots of help and support from our small and friendly team.

Meanwhile, we have enjoyed a number of events during the six months since the last newsletter. We held what many members told us was one of our best Study Days ever, *Masters of the North*, by Brian Healey – it really was a treat. We've also had a couple more Coffee Mornings, which remain very popular, especially during the months that we don't have a lecture, and we also held a New Year's Lunch at the Glendower Hotel in January. You can read about all these events below.

Part of the role of our Society is to ensure that we are part of the fabric of the Fylde Coast community and a positive force for the wider benefit of arts at local level. Recently, we have been able to fulfil this role by supporting children's arts-related projects in Blackpool and Lytham St Annes. As you're aware profits from our lecture raffles go towards maintaining art trolleys at Brian House Children's Hospice, as well as the Children's Outpatients at Blackpool Victoria Hospital, neither of which have budgets for art materials. We're delighted that we have been able to increase the amount we donate to these trolleys and we thank you, our members, for your generosity. Additionally, we applied for and received a Community Grant of £250 from The Arts Society, which we donated to the Lowther for its children's and youth services. Both Tess Tackett, who looks after the trolleys, and Tim Lince, CEO/Artistic Director of the Lowther, provide updates inside.

We're really pleased that more members are coming forward to offer items for *In the Picture*. In this month's issue you can read how Karen Grownow purchased a print of King Charles by Mr Brainwash, while Denise Malpas talks about her needlepoint embroidery of portraits of famous individuals. We're delighted too that Margaret Race responded to our invitation to provide an update on the newly revised catalogue of the Lytham St Annes Art Collection. Thank you all, we do appreciate your efforts. We hope this encourages more of you to consider submitting items. After all, this is your newsletter and we want it to reflect your interests.

Happy reading!

*Pam Foster*

Editor

# Dates for your diary

Please note that we sometimes have to make changes to our programme. Please see our website at [www.theartsocietyfylde.org.uk](http://www.theartsocietyfylde.org.uk) for the latest news on all upcoming lectures and events.

---



WED 3RD APR 2024

## The Curious Life & Films of Alfred Hitchcock

*Colin Shindler*

Will analyse Hitchcock's films in the context of his life and attempt to discover just why they have endured so successfully for so long. It will start with his British films *The Lodger* and *The Lady Vanishes*, move through his Hollywood triumphs of *Rebecca*, *Notorious*, *Rear Window* and *Vertigo*, and conclude with *Psycho*, and the slow decline that began thereafter.

THU 25TH APR 2024

## Coffee Morning

At Fylde Rugby Club; 10.30 am. Tickets cost £5 pp – to be purchased in advance.



WED 1ST MAY 2024

## Political Satire: Hogarth at the Hustings. The Election Entertainment Series & the Birth of Political Satire

*Rupert Dickens*

The long British tradition of political satire is coming to the fore again as a General Election approaches. We will look closely at the Election Series, explain Hogarth's many jokes and references, and reveal some themes with surprising topical relevance, from voter identification to the politics of immigration.

WED 5TH JUN 2024

## The Sun King & the Court of Versailles

*Jane Gardiner*

The great Sun King, Louis XIV, is best remembered for the creation of Versailles. This lecture will be an introduction to the sumptuous state apartments, the vast gardens and pleasure pavilions, the spectacular entertainments which took place both inside and out, the collections of the King and the whole etiquette of life at one of the greatest courts in Europe.



TUE 2ND JUL 2024

## The Art of Trickery: How Magicians Are Seen in Paintings, Prints & Cartoons

*Ian Keable*

Will look at how magicians have appeared in art throughout the centuries. In the 16th century, Pieter Bruegel and Hieronymus Bosch produced two of the most famous and striking pictures of the conjurer performing the Cups and Balls trick. The 18th and 19th centuries saw a proliferation in engravings and lithographs showing the magician both indoors and on the streets. Cartoonists and satirists delighted in linking politicians with skulduggery with images of them featuring the Three-Card Trick, Vanishing illusions or pulling a Rabbit out of the Hat.

*Please note the date of this lecture has been changed from 3rd to 2nd July.*



Youth theatre group, Lowther

# Helping the Lowther provide local young people with access to the arts

By Tim Lince

*A couple of years ago The Arts Society introduced Community Grants, which are designed to help Member Societies support arts causes in their local area. The grants may be used for any purpose provided that it is arts or heritage based. The Arts Society Fylde applied for and was awarded a Community Grant, which it donated to the Lowther Benevolent Fund, which provides young people with access to youth theatre, and dance groups and workshops. Below Tim Lince, CEO/Artistic Director, Lowther Pavilion Theatre offers his thanks and explains how these groups are changing the lives of many local children.*

The Lowther has been at the heart of the Fylde community for just over a century; it has often been many people's first experience of viewing live theatre or even treading the boards. There have been many changes over the 100 years but the last four years have witnessed never imagined changes in society and the needs of young people. Home education has soared since the pandemic and is now 60% above previous levels. The Lowther has responded to these needs with the introduction of home education classes for children, youth theatre groups and a youth dance company.

A Facebook comment from a parent said:

*Lowther children's and family groups are utterly amazing. In the time that Tim and Kerry have been there the vision for Lowther has exploded to the most amazing community hub for all ages and all budgets. My daughter absolutely loves going and from a child who saw no other children and had no friends, as she is home educated and we were shielding, to having so many little buddies and so much fun, it's transformed her little life. I was terrified of Covid and infections but the joy she gets from going is amazing. Kerry has the patience of all the saints as it is not easy managing such a diverse range of children's backgrounds, abilities, ages, and personalities, and she does it amazingly. The vision for Lowther is just growing and growing. I have family connections to Lowther back to my grandparents and to see it being used and loved by so many is just so wonderful.*

In addition, the Lowther has set up four separate youth theatre groups and is now embarking on setting up its own Youth Dance Company. Sessions are aimed to aid communication, listening and talking skills. Each week the Lowther receives recommendations from Head Teachers and through the HAF (Free School Meal scheme) about children who come from backgrounds where they would not normally be able to access (due to financial reasons) the services and workshops that the Lowther offers. In order to make these sessions more widely available, the Lowther set up its Benevolent Fund in 2021, which covers the fees for those unable to pay. It is through the generous donation from The Arts Society Fylde that we are able to offer more support to more children in creative and artistic studies. Our thanks must go to them for helping to support the next generation and changing the lives of so many.

---

## Honorary Membership for Hugh Ellwood

Most of you will recognise Hugh Ellwood as he has been a member and a supporter of our Society over many years, and has lectured to us on a number of occasions. In 2015, he was appointed President of what was then Fylde Decorative & Fine Arts Society (DFAS). In January this year, the Committee wished to recognise his dedication by inviting him to become an Honorary Life Member of The Arts Society Fylde. Hugh responded that he would be delighted to take up the offer. Congratulations Hugh from us all at TASF!

Hugh has had an interesting and distinguished career. He studied philosophy in Rome, followed by a degree in architecture at the University of Manchester. Previously an architect partner with Building Design Partnership, the largest multi-discipline design organisation in the UK, he was for some years an



external examiner in architecture at the University of Manchester. For several years he was also a visiting lecturer in the history of art and architecture at the University of Central Lancashire.

Hugh is also a watercolourist who has lectured extensively to various societies and organisations, including cruises, on art and architecture. Some of his artwork can be viewed in our [Members' Gallery](#).

# Encouragement and support given by The Arts Society Fylde

By Tess Tackett

“That’s amazing. We really appreciate it. It really does help with our work.”

The words of the health play specialist at Children’s Outpatients, Blackpool Victoria Hospital when I contacted her in January to discuss what new art materials would be useful for her work in the coming year.

The Children’s Outpatients, BVH and Brian House Children’s Hospice have no budget for art materials. Every year The Arts Society Fylde helps inspire creativity in our local sick children by supplying them (through art supplier Baker Ross) with a range of art materials. These include traditional resources such as paper, card, crayons and paint but also such items as ceramic hearts and wooden flowers for the children to personalise. The latter can become treasured keepsakes for the children’s families.

The value of these resources is further explained by the health play specialist:

“Art and craft sessions in a hospital setting can ease anxieties and worries. The emotional outlet art offers is invaluable in the healing process. In children and young people art gives patients control in a situation where they feel they didn’t have any. It can also serve as an effective outlet for negative emotions they may have.”

Staff at Brian House Children’s Hospice are also most appreciative of the art materials supplied. This year the children from the hospice and their families will be participating in the *Elmer Big Blackpool Parade*, a new art trail. The children at Brian House are currently painting an Elmer elephant sculpture in a secret patchwork design. It will take its place on the Elmer trail in Blackpool from 13 April - 9 June.





Part of the gallery space, HIVEArts

# Community arts in Blackpool – a HIVE of activity

By Pam Foster

Blackpool's HIVEArts has been on my radar for a while – I've followed them on social media and received news items from them for some time. One of my earliest virtual encounters with them was back in 2020, during those dark days when we were jumping in and out of lockdowns, and when nothing very much was open in Blackpool. Undeterred, and with help from Blackpool Council and Blackpool Transport, HIVEArts arranged *HIVEjacked*, an exhibition of 28 large pieces of art at 11 tram stops from the Sandcastle up to North Pier. The project provided a very welcome and free open-air art exhibition, with access for all, along the Promenade.

HIVEArts is based in Church Street in the centre of Blackpool, where it offers a coffee shop as well as arts-related activities and gallery space. The cafe is well worth a visit – lots of tempting looking cakes and the coffee was extremely good. It shares its space

with a greengrocer and there are displays of fruit and veg dotted around, as well as lots of art displayed on the walls. Posters advertise various art workshops, and other arts-related events – it's certainly a vibrant place and has the feel of a city-based cafe, rather than that of a seaside town. One of the owners – John – took time off from serving customers to show me the upstairs gallery space, where they were just preparing for their latest exhibition to celebrate *International Women's Day 2024*. The exhibition, which ran from 8-24 March featured fine art, sculpture, ceramics, print, photography, textiles and more from local and international women artists.

HIVEArts offers a huge boost to the Blackpool arts scene and creative communities. Do pop in and support this unique and important addition to the local arts movement. The Gallery is open Tuesday-Sunday 11am-3pm.

# Stitching Styles and Projects

By Denise Malpas

Some of you may remember that during 'lockdown' I wrote about my interest in embroidery - especially crewel work, where a design is worked on linen using skeins of wool rather than silk - although a mixture of both is sometimes used. My latest crewel work project was worked from a design by Philippa Turnbull at the Crewel Work Company. She provides the design, the wools and the linen, and suggests which embroidery stitches to use. As my gift for drawing and design are limited, and my interest/abilities are mainly in the stitching, working from a 'kit' allows me to concentrate on the actual embroidery while teaching me new stitches and techniques.

More recently, I have returned to a different style of needlework which my mother first introduced me to many years ago. You will recognise it as canvas work or needlepoint (sometimes referred to as 'tapestry'). Here a design is worked on canvas using wool of various thicknesses depending on whether you are aiming for an intricate design with a fine finish, or something bolder and thicker. A limited range of stitches are used to work the design, often only one ('tent' stitch). This may limit the interest it holds for an ambitious embroiderer but it can also be a relaxing activity, resulting in a satisfying finished product. As with crewel work, I mostly work from printed designs.

Needlework historians are often rather disparaging of this type of needlework as it is similar to the Berlin Work of the Victorian period, which often copied



famous paintings in rather garish-coloured wools. Recently, however, the Royal School of Needlework has introduced Emily Peacock's designs to their range of embroidery kits, which take canvas work (or the hated Berlin Work) in a new direction. Emily Peacock's designs are stylised 'portraits' of well-known writers and artists. They are bold, colourful and fun. I am now on my third. Grayson Perry was my first attempt; then I turned my attention to Virginia Woolf. I framed the Grayson Perry portrait but decided to make Virginia into a cushion. I have now started work on Oscar Wilde who will also become a cushion - keeping Virginia company on the other side of the sofa. I think I might stop there, although I'm tempted to continue as the RSN regularly adds further Emily Peacock designs to their collection. Jane Austen, Agatha Christie and William Shakespeare also feature and the last time I looked a very stylish and colourful David Bowie had been added.





# Long Live the King!

By Karen Grownow

*Thierry Guetta, best known as Mr Brainwash, came to our attention at an art presentation on a Cunard cruise onboard The Queen Victoria. He fuses elements of pop art, street art and classical paintings. He creates what he describes as his own form of 'graffiti hybrid' art.*

The presentation outlined the works of Banksy, went on to include the relationship between Banksy and Brainwash, and also introduced the work of a more recent graffiti artist, Yuvi, who would board the ship in person the next day. *Long Live the King* was shown during the presentation. It immediately attracted our attention for several reasons.

The painting was exactly how King Charles looked when my husband, then a young Sergeant in the Air Training Corps, met him in 1969 when the young Prince Charles was invested as The Prince of Wales. It would also be a wonderful memento of our first sailing with Cunard as we would be on board when the Coronation of the new King took place. Most of all, from an artistic point of view, was the fascination with the Mr Brainwash story. The French born artist was discovered by Banksy and featured in his 2010 Oscar nominated documentary *Exit Through the Gift Shop*. One of the strangest things about the career of Mr Brainwash is he is repeatedly accused of being Banksy or at least being a creation of Banksy.



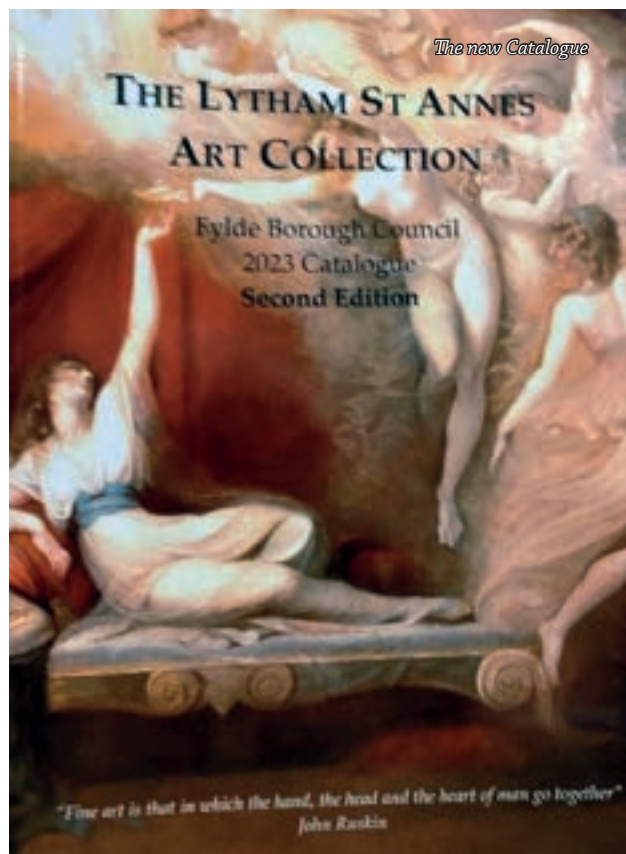
*Long Live the King* features the phrase 'Life is Beautiful'. Brainwash's fun works have made him millions in a decade. He has worked with many top companies, including Mercedes and Nike, and collaborated in many charity projects with many famous people. Brainwash hopes that by showing colourful happy work it might make people feel happier and give them the richness he feels inside, which is more important to him than the money he makes. You could say he hopes his work makes their lives more beautiful!

# Update from the Friends of the Lytham St Annes Art Collection

By Margaret Race, Chair

Last year, 2023, was a very successful year for the Friends with much to celebrate and we ended it with a very happy occasion on 13 December at the Town Hall, when we launched the Second Edition of the *Collection Catalogue*. It is an update of the 2016 edition, which was written by the incredibly talented Jacqueline Arundel (Love), as an end product of the very successful *Tagging the Treasures* project. The Friends are eternally grateful to Fylde DFAS, as you were called then, for the brilliant idea to research the Lytham St Annes Art Collection. One of your past Chairs, Marie Riley, got the funding, was inspired to call it *Tagging the Treasures* and got it off the ground. When later Marie had to leave the area, we wondered how we would manage without our leader. We had not reckoned on the skills of Jacqueline Arundel, who took over as Project Leader. As well as a printed version, the end result of *Tagging the Treasures* was also to produce an online Catalogue. For this purpose, Richard Marshall, one of the leading team, built a wonderful website. It made the Collection available to the whole world. It is a constant source of interest, exchanges of information and has resulted in several donations to the Collection. One donation was of a Richard Ansdell painting, owned by an individual in America, who sent it to us and even paid for the carriage. It caused great excitement on arrival.

The launch of the new *Catalogue* was a lovely gathering in a relaxed atmosphere. After a welcoming glass of wine we listened to Barbara Weston, our Vice-Chair and very able speaker, who explained the history of the *Catalogue* and told us about all the hard work that had gone into gathering new information that needed to be added to the first edition. She also told how our research over many years led to amendments of information already there. Guests were then able to look at and buy copies of the new version and enjoy a cup of tea or coffee with some delicious festive bites.



The editor of the new Catalogue was Committee Member, Anne Matthews. She did an incredible job, putting in many hours over a period of two years, cleverly combining the old with the new and was thorough and committed throughout. She formed a team of fellow committee members who met regularly and all brought different skills to the job. Marjorie Gregson, Stella Preston, Veronica McDonnell and myself enjoyed contributing, and we are all very proud of the result.



Chair Margaret Race at the launch of the new Catalogue

The Heritage Centre in Lytham sells copies of the *Catalogue* and we expect them to be available at Lytham Hall when we begin to exhibit in the Long Gallery. If you are not aware of this wonderful opportunity, the Long Gallery is being made ready to display our beautiful Collection. It is thought there will be three exhibitions each year with other displays between.

If you would like to buy a copy of the Catalogue direct from the Friends, please get in touch with Margaret Race - contact details are below. Priced at £25, they will be hand delivered if you live in the FY8 area but a charge of £5 p&p will be added for anyone living away.

The Friends accepts cash; cheques (made payable to Friends of the LSA Art Collection); and BACS payments, sort code 30-90-90 Account no 00057705. Margaret's contact details:  
t: 07818 855496 / 01253 727268;  
e: [margaretrace5@gmail.com](mailto:margaretrace5@gmail.com).



Roy Turner, Sue Forshaw, Dr James Taylor, David Forshaw

## RNLI guests at 200th anniversary lecture

We were delighted to host three members of the Lytham St St Annes Royal National Lifeboat Institution at our March 2024 lecture, *Grace Darling & the Fine Art of Saving Lives At Sea*, by Dr James Taylor. The lecture coincided with the 200<sup>th</sup> anniversary of the founding of the RNLI in March 1824.

Sue and David Forshaw and Roy Turner joined a packed audience at the Lowther, to discover more about Grace Darling's bravery and short life (she died aged 26) and the artistic contribution that has helped to keep her in the public eye. Grace became the 'poster girl' of the RNLI and was the first woman awarded their medal for gallantry.



*Conveying the Child's Coffin 1879, by Albert Edelfelt (1854-1905)*

## Nordic art, architecture and music

*By Pam Foster*

If asked to name 10 Impressionist and Southern European artists, most of us could probably manage that fairly easily; if asked to do the same with 10 Nordic artists some of us might struggle. So it was with great anticipation that last November we looked forward to our Study Day – *Masters of the North*, by Brian Healey – at Fylde Rugby Club.

What a treat it was. Brian presented three linked lectures: *Masters of the North*; *Edvard Munch*; and *Helsinki Music, Myth and Art Nouveau*.



Despite the constant battle to survive in the harshest of landscapes, social deprivation and political uncertainty, 19<sup>th</sup> century artists found endless inspiration in the wonders of nature, the ancient myths and the complexities of human relationships. As with all of Brian's lectures, his presentation was full of beautiful images. Subtle hues replaced the vibrancy of Southern European works – many of the seascapes were stunning. We learned about Edvard Munch's emotional and psychological states, which contributed to his paintings of pain and passion. The lecture on Helsinki featured its belle époque architecture, as well as the life and works of Sibelius, and how his music was influenced by Finland's mythical heroic tales.

Feedback from attendees was very positive with many saying it was one of the best Study Days we'd held. It certainly highlighted the remarkable contribution of Nordic countries to great art and introduced us to some artists that were new to a lot of us.



## Coffee and chat

As we don't offer lectures in August and December it was decided to hold two coffee mornings for both of these months, enabling members and friends to get together and socialise. Both of these popular events were held at Fylde Rugby Club and, as well as offering a convivial atmosphere for catching up with friends, they also provided an opportunity for members of the Committee to explain their roles, and provide information on upcoming lectures and events.

---



## Welcoming in the New Year

In early January nearly 80 members enjoyed a New Year's lunch at the Glendower Hotel. Following a glass of wine on arrival, we enjoyed a lovely lunch in a very friendly (and noisy!) atmosphere. As we don't have a lecture in January, it offered the perfect opportunity for members to catch up and wish each other a happy and healthy New Year.





**The Arts Society Fylde**  
**[theartssocietyfylde.org.uk](http://theartssocietyfylde.org.uk)**

A member of The Arts Society

Members pursue a mutual interest in the arts through lectures on a wide range of decorative and fine arts topics including art, sculpture, jewellery design, architecture and garden design. Lectures are on the first Wednesday of the month at 2pm at the Lowther Pavilion, Lowther Terrace, Lytham St Annes FY8 5QQ.

In the Picture is edited by Pam Foster. It is published twice a year in spring and autumn. If you would like to submit an item please contact the editor at [pamfos@gmail.com](mailto:pamfos@gmail.com).

Front cover: Mirror Ball, Blackpool