

VOTE OF THANKS - Jo Darbyshire

Volunteers

Volunteers from the Society willingly take on a number of additional tasks, with support from the Friends of Lowther Pavilion.

If you would like to help, please speak to any of the volunteers working on an activity that you would like to support or feel free to contact Rita Calvert on 01253 735377.

Our thanks to all the volunteers who help in the work of The Arts Society Fylde. The volunteers who assisted at this lecture include:

Greeting and Reception

Marjorie Armstrong,
Margaret Carnegie, Bernard Davies,
Tony Depledge, Pam Foster,
Kirsteen McGlashan-Hansen

Lancaster Event Tickets

Alicia Grant, Jean Holland

Visit to Umbria

Denise Fagge

Raffle

Christine Cockburn, Lesley Jarvis

Lecture Leaflet

Tony Depledge

New Members

John Driffill

Refreshments

Volunteers from the
Friends of Lowther Pavilion

Visitors

Olga Depledge

NEXT LECTURE

Wednesday 4 March 2020

At the Lowther Pavilion Theatre at 2pm
A change from the programme on your Membership Card
Brian Healey on *From Peasants to Czars:*
A *Portrait of 19th Century Russia*

www.theartsocietyfylde.org.uk



THE ARTS
SOCIETY
FYLDE

FROM DOWNTON TO GATSBY
JEWELLERY AND FASHION
FROM 1890 TO 1929

ANDREW PRINCE

5 February 2020

Lowther Pavilion, Lytham St Annes, FY8 5QQ

www.theartsocietyfylde.org.uk

Supporting the Arts in Blackpool, Fylde and Wyre

FROM DOWNTON TO GATSBY JEWELLERY AND FASHION FROM 1890 TO 1929

We start 2020 with a look back at jewellery and fashion in the early part of the 20th Century through the medium of one of British television's most popular series - Downton Abbey.

Our guide for the journey is Andrew Prince, who was commissioned to produce many jewels for the main characters. This inspired him to create today's presentation, based on Downton and the changing styles of the time portrayed.

Jewellery and fashion are often seen as two entirely separate and distinct fields of design, but this is very far from the case.

Andrew promises to lead us through the extraordinary periods and events between 1890 and 1929, where the great fashion houses collaborated with the finest of jewellers to produce works of art of outstanding quality and glittering opulence.

Along with this he discusses the clients and patrons who commissioned the jewels and how they were worn with their sumptuous gowns.

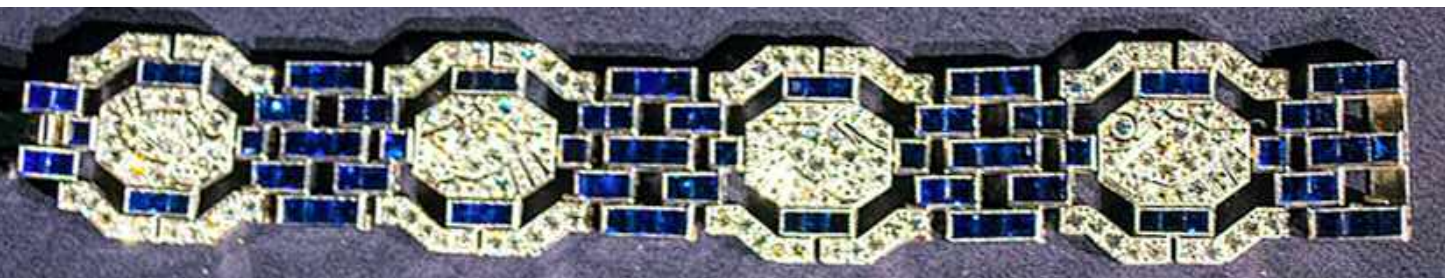
ANDREW PRINCE

Andrew Prince says that his passion for jewellery can be traced back to the age of three when he swallowed one of his mother's pearl earrings from a jewel box hidden in a cupboard. When he was nine, his mother took him to the Princely Magnificence exhibition at the V&A, exhibiting jewels dating from 1500 to 1630. Dazzled by the splendour and opulence of the jewels on show, Andrew decided that he would devote himself to creating jewellery. In 1987, just before leaving school, he went to visit Geneva to view Sotheby's auction of the Duchess of Windsor's jewellery. For the first time, he held pieces created by some of the greatest jewellers, fashioned from only the finest of stones and set in designs of outstanding quality. It was a life-changing experience.



Working in Bond Street for Antiques Roadshow expert Ian Harris, Andrew developed an appreciation for jewels valued for their quality of design and craftsmanship, rather than for how much the stones were worth. His taste for fine 'costume jewellery' can be traced back to an antique market: a Victorian brooch not with emeralds and diamonds but with crystal and green glass set in silver and gold. Beautiful jewellery not requiring expensive stones; the elegance of the design and the quality of the workmanship are what truly matter. Private commissions followed: Michael Jackson (a large crystal and pearl shoulder jewel) and Shirley Bassey wore Andrew's creations.

A V&A commission to accompany the Tiaras, Past and Present exhibition in 2002 led to Andrew's jewellery in films: Mrs Henderson Presents with Judy Dench; The Young Victoria with Emily Blunt and Miranda Richardson. In 2012, he created a large collection of jewellery for Downton Abbey: Maggie Smith, Shirley Maclaine, Elizabeth McGovern and Michelle Dockery were all adorned with tiaras, combs, earrings and necklaces designed and created by Andrew Prince.



Cover: Highclere Castle, location for Downton Abbey (Hayley Blackmore, Creative Commons)

This page: Tiffany bracelet from "The Jazz Age" at Cleveland Museum of Art (Tim Evanson, Creative Commons)